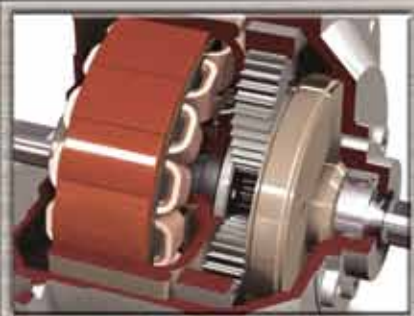




WINTER | 2015 Product CATALOG



The latest information on all of IMSI/Design's exciting new products for winter 2015



Table of Contents

Winter 2015 Catalog



Top 5 Reasons IMSI/Design is # 1

Discover the reasons why IMSI/Design has been in the lead in the development of design software solutions for over a quarter century!



TurboApps™ Mobile Apps

The first and only mobile DWG™ viewer that supports both 2D and 3D and much, much more.



3D Printers and Materials

See our latest selection of 3D printers and materials with solutions for school, office, or home!



TurboCAD® Designer, Deluxe & Pro

See the entire TurboCAD family of CAD design products for our exciting new release!



DesignCAD™ 3D Max & 2D

One of our most popular 2D or 3D CAD solution lets you unleash your imagination and creativity.



TurboCAD® Mac Designer, Deluxe & Pro

For CAD design on the Mac - no body offers a family of performance products like our latest series!



TurboFloorPlan® 3D Deluxe & Pro

Designing your dreamhome is easy using our full range of home design & landscaping solutions.



TurboCAD LTE & LTE Pro

Advanced drafting & detailing and more - the perfect yet affordable solution. Works like AutoCAD® LT.



Renditioner

Powerful plug-in for Trimble® SketchUp® that provides high-quality photorealistic rendering.



TOP 5 REASONS IMSI/Design is #1



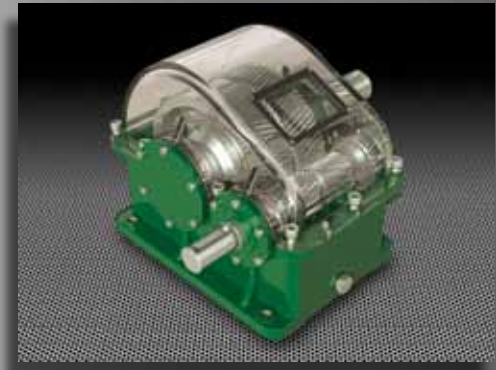
1 #1 Best Selling CAD Software
Our trusted design solutions are available worldwide - now in over 30 countries and growing!

2 Over Twenty Five Years of Expertise in CAD
Nothing counts like experience when developing award-winning software solutions and IMSI/Design has over a quarter century of success!

3 Outstanding Customer Service & Support
Our highly qualified technical support teams are dedicated to providing customers with superior service via phone, email, or web!

4 Best Value in Design Software
Our wide range of design solutions bring you more advanced features at better prices!

5 Guaranteed Satisfaction
There are no worries with our "no questions asked" return policy. We're not satisfied until you are!



TurboAPPS™

Next Generation Solutions for Mobile AEC



“Fieldwork is now a breeze! Thanks, TurboSite!”



**BEST
of Show**

**AIA National 2013
Architosh**

TurboAPPS™

If you do site visits or fieldwork, TurboApps has the solution you've been waiting for.

For decades sharing drawings with your extended team, as well as documenting walk-throughs and creating punch lists have been a time-consuming and physically-tiring process. A great example is our newest TurboSite app that offers navigation around plans, including all saved views, is lightning fast using simple gestures. GeoWalk™ (patent pending) tracks your location within a structure or site - with or without connectivity to the Internet, satellites, cell towers, or even wifi.

Created by the same company that has brought you the Award-Winning TurboCAD product line.



TurboSite® Plus TurboSite® Pro TurboSite® TurboSite Reader.. TurboReview.. TurboViewer® Pro TurboViewer

Visit TurboAPPS.com to learn more about these powerful mobile apps

Learn more about our powerful range of mobile apps - visit TurboApps.com

Available on the
App Store

Available for
Android

IMST DESIGN Purchase direct for
iPad iOS

TurboCAD® 21

For Windows 8
7, Vista, XP

Now with
AutoCAD® 2D
workalike mode



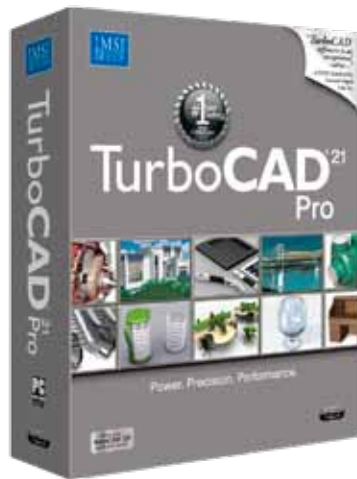
Bringing you the best in 2D, 3D, and photorealistic rendering!

A leader in design software delivering exceptional value to both 2D & 3D CAD users for over twenty years. TurboCAD has a perfect solution to fit you!

Pushing the Boundaries of Design



New TurboCAD 21 Does it All



TurboCAD® Pro 21

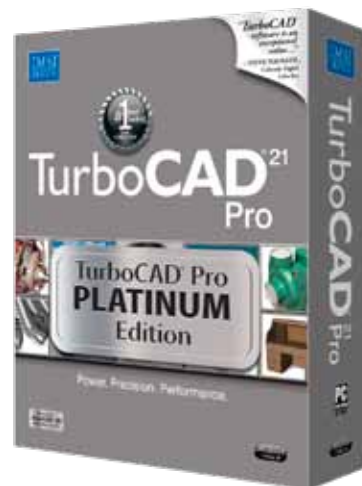
Delivers affordable, professional CAD software for design, drafting, and detailing. Parametric constraints, 3D surface and ACIS® solid modeling, LightWorks™ photorealistic rendering, architectural and mechanical tools, and extensive file support appeal to professionals across disciplines. Plus, TurboCAD Pro is now fully 64-bit compatible to utilize expanded computer memory.

**Build your project success
with TurboCAD Pro 21
& Pro Platinum 21!**

Visit TurboCAD.com for more details.

TurboCAD® Pro 21 Platinum Edition

A premium, professional CAD package. It includes all the speed and technology of TurboCAD Pro for 2D/3D drafting, detailing, modeling, rendering, and extensive file sharing. Plus, get advanced tools for mechanical design, and a suite of architectural tools that are AutoCAD® Architecture compatible. Now fully 64-bit compatible!

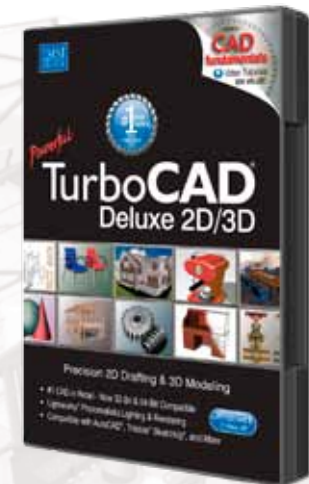


TurboCAD® 21 Deluxe 2D/3D

Powerful and complete 2D/3D CAD software with hundreds of drawing, modifying, dimensioning and annotation tools. Materials, lighting, and photorealistic rendering let you create powerful presentations of home designs, technical models, and mechanical illustrations. Plus get extensive file support including SketchUp® and the latest AutoCAD® DWG/DXF filters.

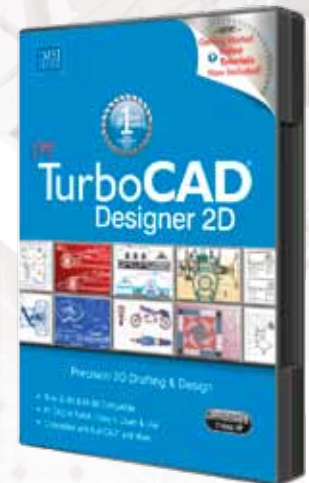
**Now TurboCAD Deluxe 21 includes
CAD tutorials with video training!**

Nothing could be easier. It's like having your own personal tutor to help you get the most out of your TurboCAD software.



TurboCAD® 21 Designer 2D

Easily creates precision floor plans, technical illustrations, maps, flow charts, and more. Choose from beginner, intermediate or advanced modes within a modern UI to quickly access hundreds of 2D drawing, modifying, and dimensioning tools. Share your work in over popular file formats, including the latest AutoCAD DWG/DXF.



← to contents



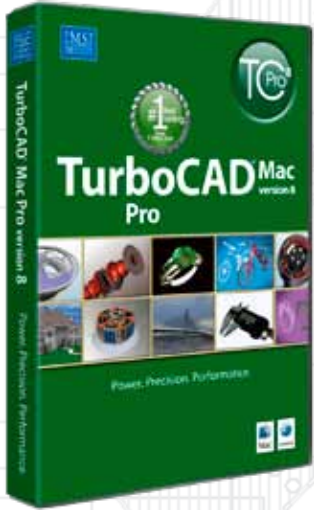
TurboCAD[®] MAC version 8



TurboCAD[®] Mac Pro, Deluxe, and Designer - version 8

The latest release of our powerful TurboCAD for the Mac CAD brings the perfect solution for the professional and hobbyist alike.

Great new release of the #1 Best Selling CAD in Retail



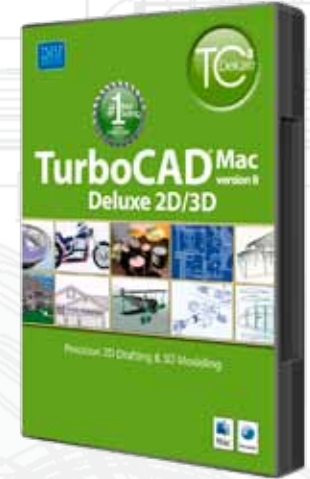
TurboCAD[®] Mac v8 Pro

TurboCAD Mac Pro is a professional CAD application that enables users to create innovative designs for a wide range of industries and disciplines. It's both feature and content rich, packed with professional level 2D drafting tools, 3D modeling tools, and thousands of parts, symbols and floorplans. TurboCAD Mac Pro also offers feature-rich photorealistic rendering, animation and superior interoperability. Always an excellent CAD purchase for the Macintosh user.

*MacUser Highly Commended 3D Product 2009 awarded to TurboCAD Mac Pro

TurboCAD[®] Mac v8 Deluxe 2D/3D

TurboCAD Mac Deluxe is packed with the highest quality drafting tools and the latest ACIS[®] modeling engine. Create 3D models and precise 2D drawings, and easily import/export to the most common file types. Anything you can dream up, TurboCAD Mac Deluxe brings to life. The simple user interface combined with intuitive tools makes it an easy to use yet powerful CAD solution for the Macintosh user.



One of the best releases of the #1 Best Selling CAD in retail yet!

Nothing could be easier to use for developing CAD designs on the Mac. New TurboCAD does it all!

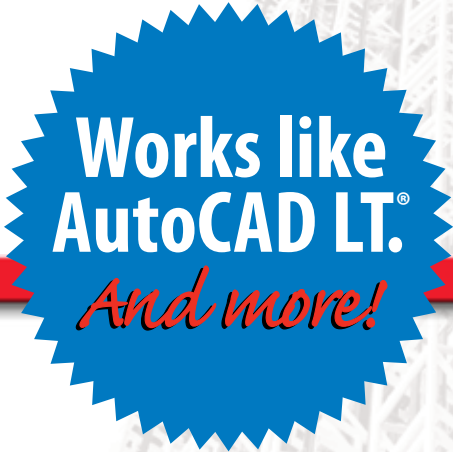
TurboCAD[®] Mac v8 Designer 2D

From simple hobby sketches to production ready, precision drawings, TurboCAD Mac Designer 2D offers you powerful functionality typically found in programs costing thousands. With intuitive snaps, alignments, prompts, hints and online help, even beginners can quickly get up to speed and produce compelling designs.



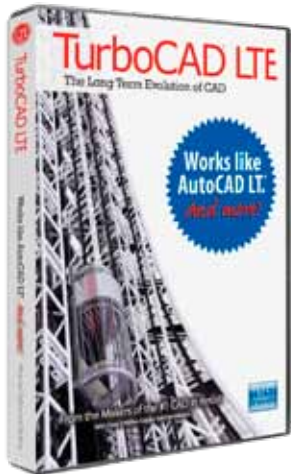


TurboCAD[®] LTE



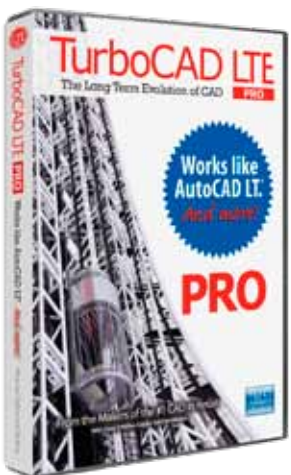
The Long Term Evolution of CAD

Works like AutoCAD LT. And More!



TurboCAD LTE

TurboCAD[®] LTE works like AutoCAD LT[®]. And more! Full featured 2D CAD including many advanced features for advanced drafting and detailing are easily accessible in a familiar user interface similar to AutoCAD LT classic. Plus compatibility with .DWG, .SKP and more offer excellent workflow making TurboCAD LTE the perfect companion product.



PRO

TurboCAD LTE Pro

TurboCAD[®] LTE Pro works like AutoCAD LT[®]. But better! As the advanced version of TurboCAD LTE, this professional, easy-to-use 2.5D CAD program provides excellent compatibility with .DWG, .SKP and more. It's all the features and functionality you look for in AutoCAD LT, but with many more powerful features CAD professionals want.

TurboCAD LTE A familiar CAD interface with the power to get your design projects done with ease

"I am over the moon that I have found TurboCAD LTE."
-Peter Harding

TurboCAD LTE is a professional 2D CAD application at an incredible price. It provides all the power tools required to get projects done on time, at a fraction of the cost of AutoCAD LT[®], yet is fully .DWG compatible.

Familiar user interface
No need to re-learn what you already know. Install, start, and get up and running immediately without looking back. The familiar UI lets you concentrate on creating your design and not how to use the software.

1 Toolbars
Standard toolbar and icons function the same way. Simply click and let the drawing begin.

2 Dynamic Input
Familiar heads up display with dynamic input at cursor.

3 Command line
Need the command line? No worries, we have it. Common keyboard aliases and quick keys are already included and fully customizable. Even the ESC key works as expected.

4 Menus
Pull down a menu and find the exact command you want with no surprises. Call it CAD intuition.

5 Palettes
Tool palettes provide a fast way to access common and customizable tools with a familiar look and feel.



Share compatible files
TurboCAD LTE is also a great companion for AutoCAD[®] workflow and more. Share compatible .DWG files and increase interoperability with support for other industry standard formats such as SketchUp[™], .SKP, HP[™], PLT, and more.

Full featured power
Don't just settle for the status quo of CAD. Go above and beyond and get the benefits from all the additional advancements of powerful new TurboCAD LTE.

Hyper-accelerated graphic performance
Increase zoom and pan performance so you don't have to wait during a moment of inspiration (see bottom panel of package for more details*).

Top requested features
TurboCAD LTE provides many top user requested features such as setting draw order by layer, specifying priority osnaps, transparent fills, and more.

Highly Extensible
Expand TurboCAD LTE capabilities with powerful plug-ins such as Drawing Compare and Hatch Pattern Creator to realize the almost unlimited possibilities it can provide.

Intelligent Architectural Walls
Save valuable time using architectural walls that are self healing with automatic cleanup and AutoCAD Architecture compatible.

"Excellent product quality plus timely and courteous customer support."
-Randall T. Lane

"Thanks for this awesome piece of software."
-Merwe de Villiers

"At last an alternative to the Autodesk 'monster'."
-Patrick Anderson



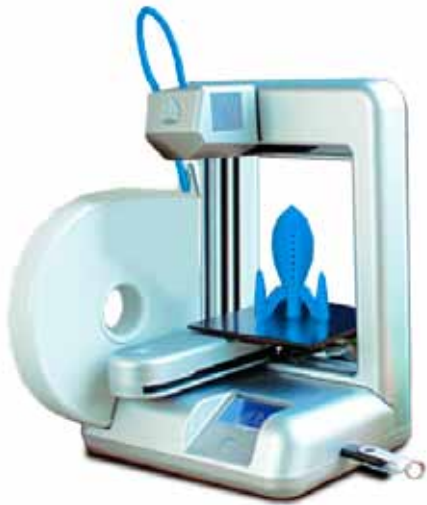
3D Printers



[learn more >](#)

The exciting technology of 3D Printing is here!

Easy to own and economical to operate in your home, school or office. The output tool of choice for designers, engineers, marketers, artists, architects and educators. With a 3D Printer, you can communicate concepts, deliver products to the market fast, and equip students with tomorrow's skills - today!



Cube® 3D Printer

The Cube 3D Printer is a 3D printer for everyone. It fits on your desktop and is super easy to use turning ideas into real 3D objects you can hold, like toys, jewelry and more. In fact, the Cube 3D Printer was recently named "Easiest to Use" and more by Make Magazine.

Unlike traditional printers, the Cube prints in 3D which means that instead of putting ink onto a flat surface like regular printing, it builds up material in three dimensions to create a real object. The Cube works with easy load color cartridges that contain a special type of ABS plastic. It's safe and can be recycled, and if your piece is thick enough, it's also dishwasher-ready! Materials are available in 8 different colors: white, magenta, red, tan, yellow, green, blue, and black. You can use one color at a time while printing on a Cube.

CubeX™ 3D Printer

Bring your 3D models and CAD drawings to life with the CubeX™ 3D printer. With its clear and open design and simple interface, the CubeX™ 3D printer is ideal for the home, classroom and office environment. Create prototypes, models, RC parts, toys... the list is endless! BFB 3D printers are based on additive layer manufacturing (ALM) methods.



MakerBot® 3D Printer and 3D Digitizer

Our newest line of quality 3D printers brings you the Replicator 2 and 2X series of printers and now includes a 3D Digitizer from MakerBot.models and Create prototypes, models... the list of possibilities is endless!



PLA



ABS

Printing Materials

We carry the perfect printing materials to use with your 3D printer. From PLA, ABS, as well as Cube printer cartridges. All available in a rainbow of colors will make your first and next project come out perfect.



DesignCAD™

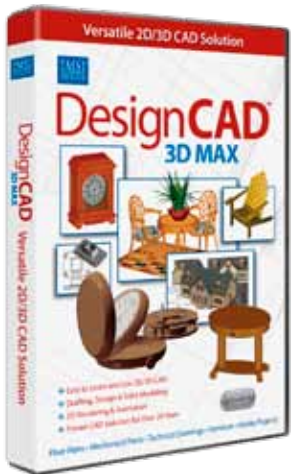
The Versatile CAD Solution!

For Windows®
8
7, Vista, XP

2D & 3D MAX

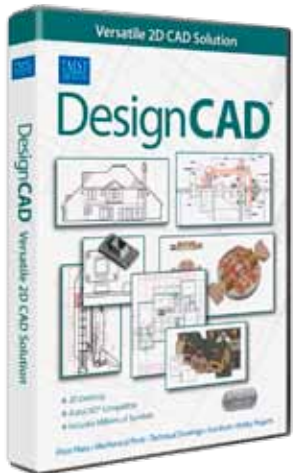
DesignCAD™ 3D MAX & DesignCAD™ 2D

Our new DesignCAD 3D MAX and 2D versions 20 bring you a choice of 2D and 3D precision drafting and modeling.



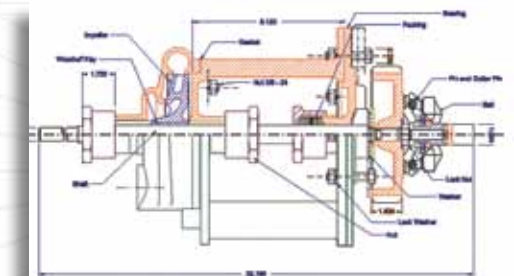
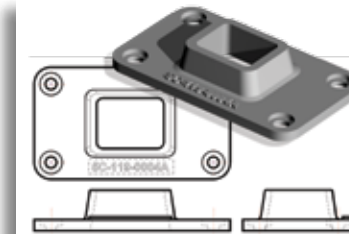
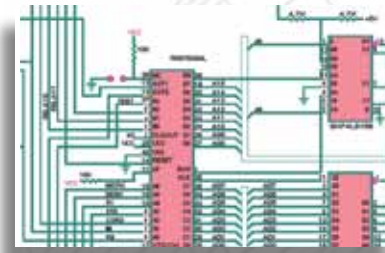
DesignCAD™ 3D MAX

DesignCAD 3D Max combines easy to learn and use 2D drafting with powerful and precise 3D modeling to unleash your imagination and creativity. Easily design anything with its intuitive interface and extensive online help libraries. DesignCAD 3D MAX is the versatile CAD tool for beginners and advanced users. Use a complete set of 2D drafting and design tools, including drawing layers, hatch patterns and full dimensioning capability, and render 3D models with materials or textures for added impact.



DesignCAD™ 2D

DesignCAD is a versatile and easy-to-use CAD program designed to help you get started quickly. Simple operations make it easy to produce accurately scaled architectural and mechanical drawings. Create, edit, scale, move, rotate and copy individual objects. A full complement of 2D drafting and design tools, drawing layers, snap, hatch patterns, and full dimensioning capability are included. DesignCAD also makes it easier to collaborate on a project. Simply import/export editable DXF/DWG files without the risk of data loss or corruption.



Turbo FloorPlan® 3D

The easiest way
to design
your dream home!



Home & Landscape

TurboFloorPlan® 3D Home & Landscape Pro & Deluxe!

Our award-winning design software, with everything you need to visualize and design your dream home and outdoor living spaces.

TurboFloorPlan® 3D Pro

Everything you need to visualize and design your dream home and outdoor living spaces. Increase the value of your home by updating your kitchen or bathroom. Be your own interior decorator applying real world colors, materials and custom lighting to walls, furniture and cabinets. Create beautiful landscapes with gardens, pathways, deck or patio choosing from 2,000 plants. Take a virtual walkthrough and see your designs in photorealistic 3D. Simply dream it and design it!



TurboFloorPlan® 3D Deluxe

Create beautiful landscapes with gardens, pathways, deck or patio choosing from 2,000 plants. Then take a virtual walkthrough and see your designs in photorealistic 3D. Even reduce your energy bills and fight global warming with new "Green Home". Everything you need to visualize and design your dream home and outdoor living spaces. Be your own interior decorator applying real world colors, materials and custom lighting to walls, furniture and cabinets.



TurboFloorPlan® Instant Series

TurboFloorPlan Instant Architect

Instant Architect is an easy-to-use home design and remodel solution featuring drag and drop simplicity. Create the perfect home automatically with our House Builder Wizard.





Renditioner

Photorealistic rendering plug-in for Trimble SketchUp



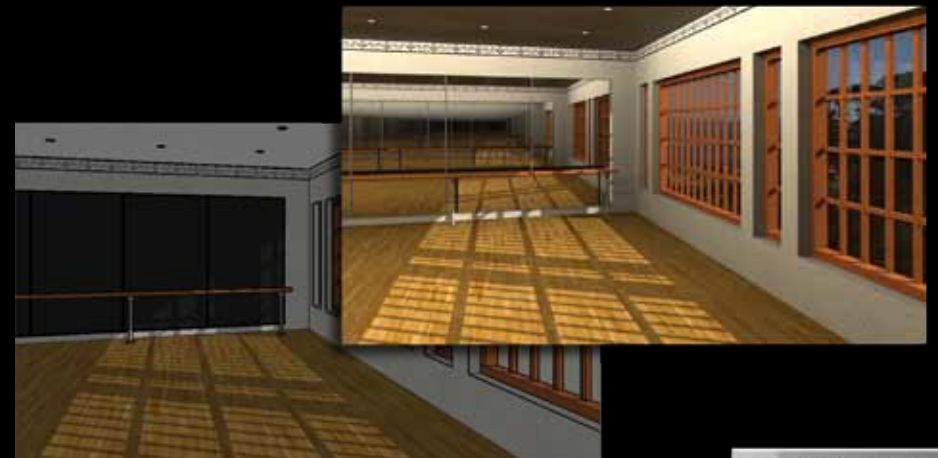
Versions available for Windows and Mac OS X

New Renditioner Pro works with Trimble® SketchUp®

Renditioner Pro is a plug-in for SketchUp that provides high-quality photorealistic rendering – fast and easily.

Renditioner

Available in v3 - Renditioner, Renditioner Pro, and free Renditioner Express - this powerful plug-in for SketchUp that provides high-quality photorealistic rendering – fast and easily. Renditioner works directly within SketchUp and lets you control the materials, advanced lighting components, environments, and background images. Renditioner is “one button” easy -- now more than ever. Features are optimized in a jargon free interface. Simplicity paired with speed and working directly in SketchUp, means you can achieve design visualization objectives more quickly.



Works with Trimble® SketchUp®

The latest information on all of IMSI/Design's exciting new products and mobile apps!



IMSI/Design, LLC
25 Leveroni Court
Novato, CA 94949
tel: 415.483.8000
fax: 415.884.9023
www.IMSIdesign.com

